



Plot 16 The Maude, New Romney

New Romney

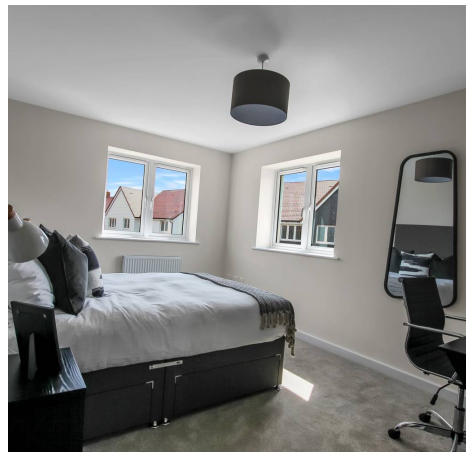
£550,000

Plot 16 The Maude

, New Romney

Available to buy using Green Mortgage Deal ----
Stunning 4-bed townhouse in a tranquil cul de sac,
boasting high-quality finishes and a 10-year
guarantee. Modern design with spacious layout, en-
suite master bedroom, high-spec kitchen, and
expansive rear garden. Close to high street and
beaches, offering comfort, style, and relaxation.
Tenure: Freehold

- Buy Using Green Mortgage Deal
- Four Bedroom Town House
- Peaceful Cul De Sac Location
- Large Living Space
- Generous Rear Garden
- Open Views to Rear
- High Specification
- Fitted Modern Kitchen
- New Build Home
- Spacious Family Home





Entrance Hall

Living Room

18' 9" x 17' 10" (5.72m x 5.43m)

Kitchen

14' 8" x 10' 8" (4.46m x 3.25m)

Wc

Landing

Bedroom

13' 0" x 10' 2" (3.96m x 3.11m)

Bedroom

12' 5" x 10' 2" (3.79m x 3.11m)

Bedroom

12' 5" x 7' 3" (3.79m x 2.22m)

Bathroom

7' 8" x 6' 5" (2.34m x 1.95m)

Bedroom

26' 6" x 14' 4" (8.07m x 4.38m)

Ensuite Shower Room

8' 8" x 6' 3" (2.63m x 1.91m)





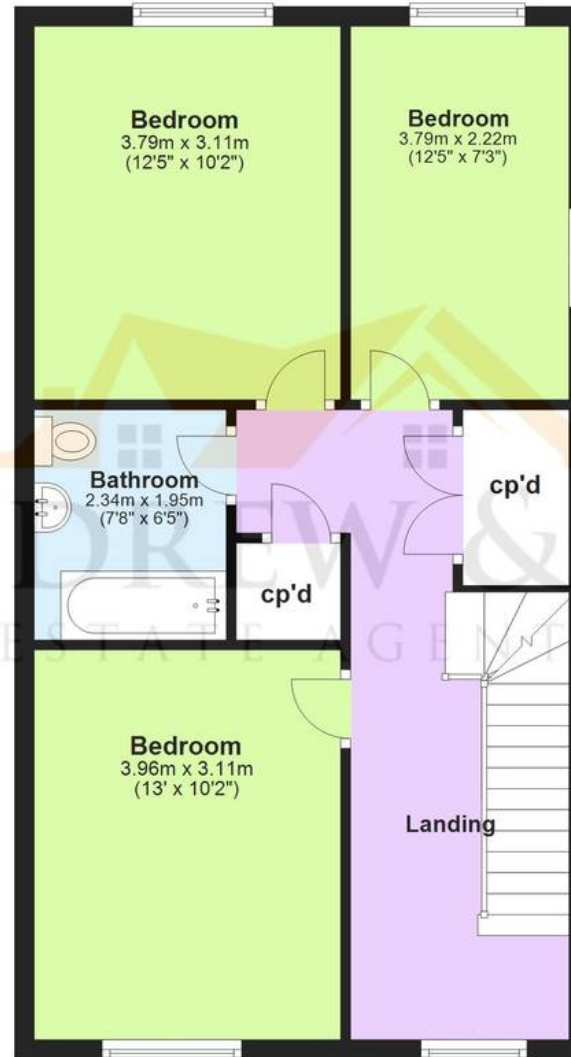
Ground Floor

Approx. 55.8 sq. metres (600.9 sq. feet)



First Floor

Approx. 55.8 sq. metres (600.9 sq. feet)



Second Floor

Approx. 46.4 sq. metres (499.1 sq. feet)



Total area: approx. 158.0 sq. metres (1700.8 sq. feet)

Plans are for layout purposes only and are not drawn to scale, with any doors, windows and other internal features merely intended as a guide.
Plan produced using PlanUp.

These particulars are intended to give a fair and reliable description of the property but no responsibility for any inaccuracy or error can be accepted and do not constitute an offer or contract. We have not tested any services or appliances (including central heating if fitted) referred to in these particulars and purchasers are advised to satisfy themselves as to the working order and condition, if a property is unoccupied at any time there may be reconnection charges for any switched off/disconnected or drained services or appliances. All measurements are approximate.



Andrew & Co Estate Agents - New Romney

01797 362898

newromney@andrewandco.co.uk

