



Steynes Coast Road, Littlestone

New Romney

£700,000

Steynes Coast Road

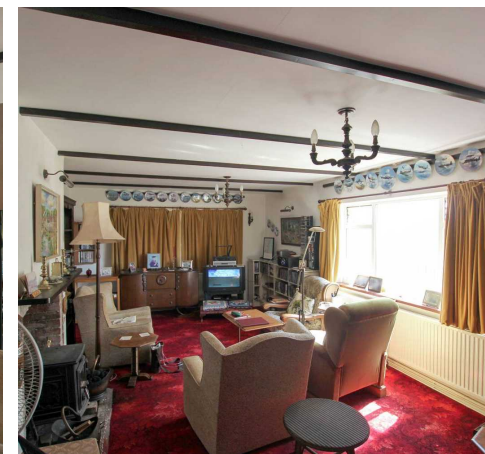
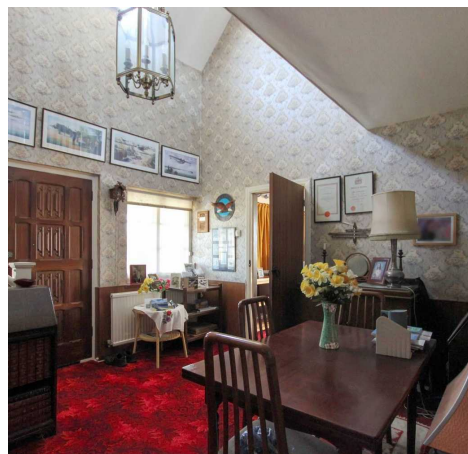
Littlestone, New Romney

Superb detached five bed seafront home in Littlestone. Spacious, elegant with stunning sea views, chain-free. Opposite Littlestone Beach, close to shops. Tranquil garden, garage, lift, office, spacious kitchen. Potential for luxury seaside retreat. Viewing recommended.

Council Tax band: F

Tenure: Freehold

- Five Bedroom
- Detached House
- Fantastic Sea Views
- Spacious Reception Rooms
- Large Kitchen
- Garage
- Lift to First Floor
- Chain Free





Garden Room

Entrance Hall

11' 9" x 13' 0" (3.59m x 3.97m)

Living Room

12' 10" x 23' 11" (3.91m x 7.28m)

Dining Room

10' 0" x 17' 2" (3.06m x 5.24m)

Kitchen

13' 0" x 19' 7" (3.96m x 5.96m)

Office

10' 1" x 15' 1" (3.07m x 4.59m)

Wc

Store

Rear Porch

Cellar

Galleried Landing

13' 0" x 13' 1" (3.97m x 3.98m)

Bedroom

12' 11" x 13' 0" (3.93m x 3.96m)

Bedroom

11' 8" x 11' 11" (3.56m x 3.62m)

Bedroom

12' 10" x 10' 9" (3.91m x 3.28m)

Bedroom

10' 6" x 9' 11" (3.21m x 3.01m)

Inner Hallway

Bathroom

Shower Room

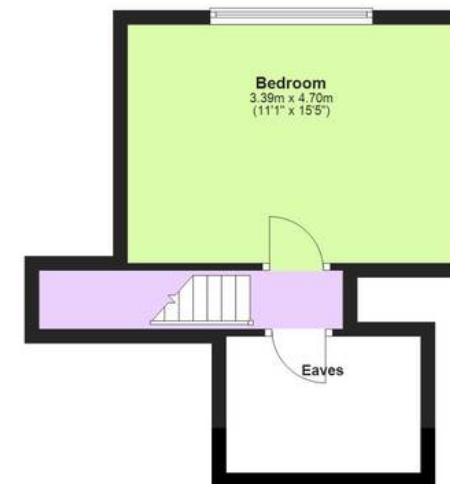




First Floor
Approx. 84.9 sq. metres (913.5 sq. feet)



Second Floor
Approx. 25.4 sq. metres (273.0 sq. feet)



Ground Floor
Approx. 124.4 sq. metres (1338.7 sq. feet)



Total area: approx. 234.6 sq. metres (2525.2 sq. feet)

Plans are for layout purposes only and not drawn to scale, with any doors, windows and other internal features merely intended as a guide.
Plan produced using PlanUp.

These particulars are intended to give a fair and reliable description of the property but no responsibility for any inaccuracy or error can be accepted and do not constitute an offer or contract. We have not tested any services or appliances (including central heating if fitted) referred to in these particulars and purchasers are advised to satisfy themselves as to the working order and condition, if a property is unoccupied at any time there may be reconnection charges for any switched off/disconnected or drained services or appliances. All measurements are approximate.



Andrew & Co Estate Agents - New Romney

01797 362898

newromney@andrewandco.co.uk

