



5 Sycamore Close, Dymchurch

£380,000 Freehold

Four Bedroom • End of Terrace Bungalow • Large Living Room • Kitchen/Diner • Wrap Around Garden • Workshop • Central Location



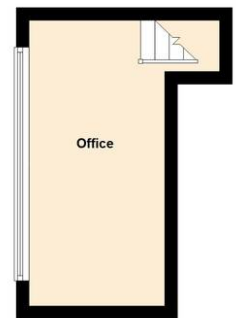


Ground Floor

Approx. 134.8 sq. metres (1451.5 sq. feet)

Mezzanine

Approx. 10.3 sq. metres (111.2 sq. feet)



Total area: approx. 145.2 sq. metres (1562.7 sq. feet)

Plans are for layout purposes only and not drawn to scale, with any doors, windows and other internal features merely intended as a guide. Plan produced using PlanUp.