



## Plot 26, The Montague, Freeman's Way

Prices From £425,000





## Plot 26, The Montague

Freemen's Way, Deal

Stylish 4-bed semi-detached "The Montague" by Dandara, with garage & driveway. Spread over 3 floors, modern open-plan living, W.C., en-suite, garden. 2 double, 1 single bedroom. Stylish family bathroom.

Tenure: Freehold

- NEW BUILD HOUSE
- FOUR BEDROOM SEMI-DETACHED HOUSE
- GARAGE AND DRIVEWAY
- EN-SUITE TO BEDROOM ONE
- 10 YEAR PREMIER GUARANTEE
- 2 YEAR DANDARA GUARANTEE
- OPEN PLAN KITCHEN AND DINING AREA
- DESIGNATED STORAGE
- CHAIN FREE
- READY SUMMER 2024

This Computer Generated Image is indicative only to give an impression of the house design, it is not plot specific.

### Hallway

Doors leading to Lounge/diner, Kitchen, Cloakroom, and stairs leading to the first floor.

### Cloakroom

High quality white sanitary ware comprising close coupled WC, basin with tiled splash back and chrome tap.

### Kitchen

11' 7" x 10' 9" (3.53m x 3.28m)

High quality fully fitted contemporary kitchens with stylish laminate worktops. Equipped with appliances including: integrated single or double oven, fridge freezer, dishwasher, hob, extractor hood and a stainless steel 1 1/2 bowl sink with chrome tap.

### Lounge/Dining Area

19' 3" x 18' 3" (5.87m x 5.55m)

This open plan spacious room is perfect for relaxing with friends and family. Doors leading out to the rear garden.

### First Floor Landing

Doors to Bedrooms, Family Bathroom, Store Cupboard and stairs to second floor landing.

### Bedroom 2

18' 3" x 11' 7" (5.55m x 3.53m)

Spacious double bedroom.

### Bedroom 3

11' 7" x 10' 3" (3.54m x 3.13m)

Spacious and light double bedroom.

### Bedroom 4

11' 7" x 7' 7" (3.52m x 2.31m)

Lovely, light single bedroom.

### Bathroom

Quality white suite featuring a bath, basin with chrome taps, WC and heated chrome towel rail. Porcelanosa floor and wall tiles.

### Second Floor Landing

Doors to bedroom 1 and store area.





This Computer Generated Image is indicative only to give an impression of the house design. It is not plot specific.

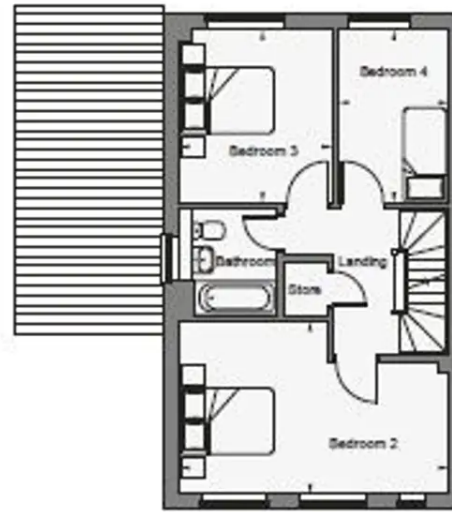




## GROUND FLOOR

**Kitchen**  
3.28m x 3.53m    10'9" x 11'7"

**Living Room / Dining**  
5.55m x 5.87m    18'3" x 19'3"

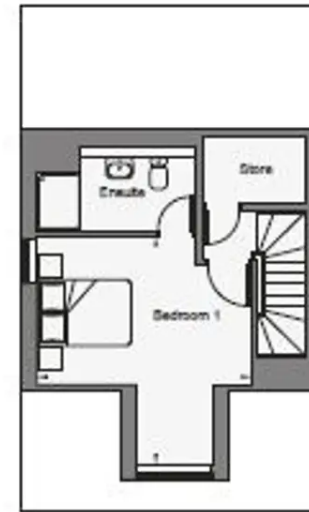


## FIRST FLOOR

**Bedroom 2**  
5.55m x 3.53m    18'3" x 11'7"

**Bedroom 3**  
3.13m x 3.54m    10'3" x 11'7"

**Bedroom 4**  
2.31m x 3.52m    7'7" x 11'7"



## SECOND FLOOR

**Bedroom 1**  
4.38m x 4.70m    14'4" x 15'5"

These particulars are intended to give a fair and reliable description of the property but no responsibility for any inaccuracy or error can be accepted and do not constitute an offer or contract. We have not tested any services or appliances (including central heating if fitted) referred to in these particulars and purchasers are advised to satisfy themselves as to the working order and condition, if a property is unoccupied at any time there may be reconnection charges for any switched off/disconnected or drained services or appliances. All measurements are approximate.



**Andrew & Co Estate Agents - Cheriton/Folkestone**

01303 279955

[cheriton@andrewandco.co.uk](mailto:cheriton@andrewandco.co.uk)

