



12 Orchard Drive, Littlestone

New Romney

£850,000

12 Orchard Drive

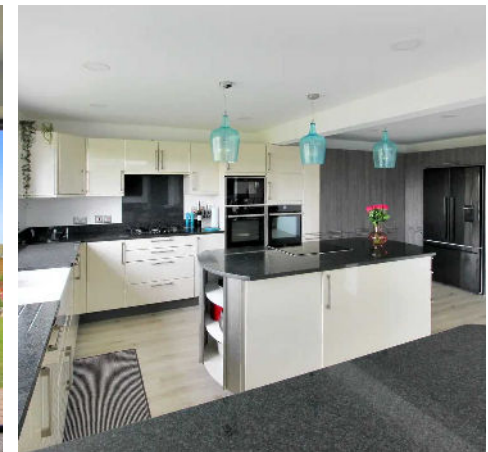
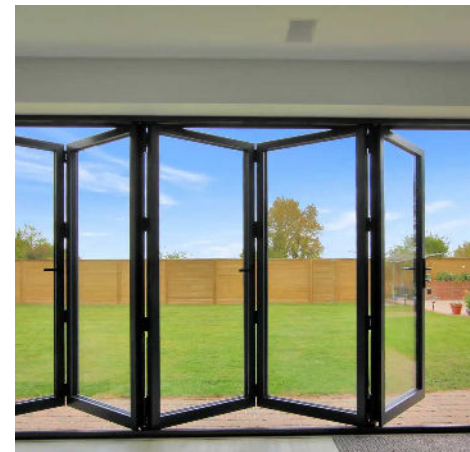
Littlestone, New Romney

Stunning 4-bed detached home on Littlestone Golf Course. Luxurious open-plan living, modern kitchen, office, utility room, sunny garden & patio. Double garage, 4-car parking. Prime location with peaceful outdoor space & golf course views. Ideal for stylish living & entertaining.

Council Tax band: G

Tenure: Freehold

- Four Bedroom Home
- Fabulous Open Plan Family Space
- Separate Living Room
- Modern Kitchen
- Utility Room
- Two En-Suite Bedrooms
- Golf Course Views
- Spacious Home





Porch

Entrance Hall

20' 4" x 8' 10" (6.19m x 2.69m)

Open Plan Family Space

20' 5" x 36' 1" (6.22m x 11.00m)

Living Room

21' 1" x 13' 1" (6.43m x 3.98m)

Office

10' 4" x 18' 3" (3.14m x 5.57m)

Utility Room

4' 11" x 10' 8" (1.49m x 3.26m)

Wc

Integral Garage

18' 11" x 14' 2" (5.76m x 4.32m)

Landing

Bedroom

14' 6" x 13' 0" (4.43m x 3.97m)

Ensuite Shower Room

Bedroom

14' 8" x 16' 2" (4.47m x 4.93m)

Ensuite Shower Room

Bedroom

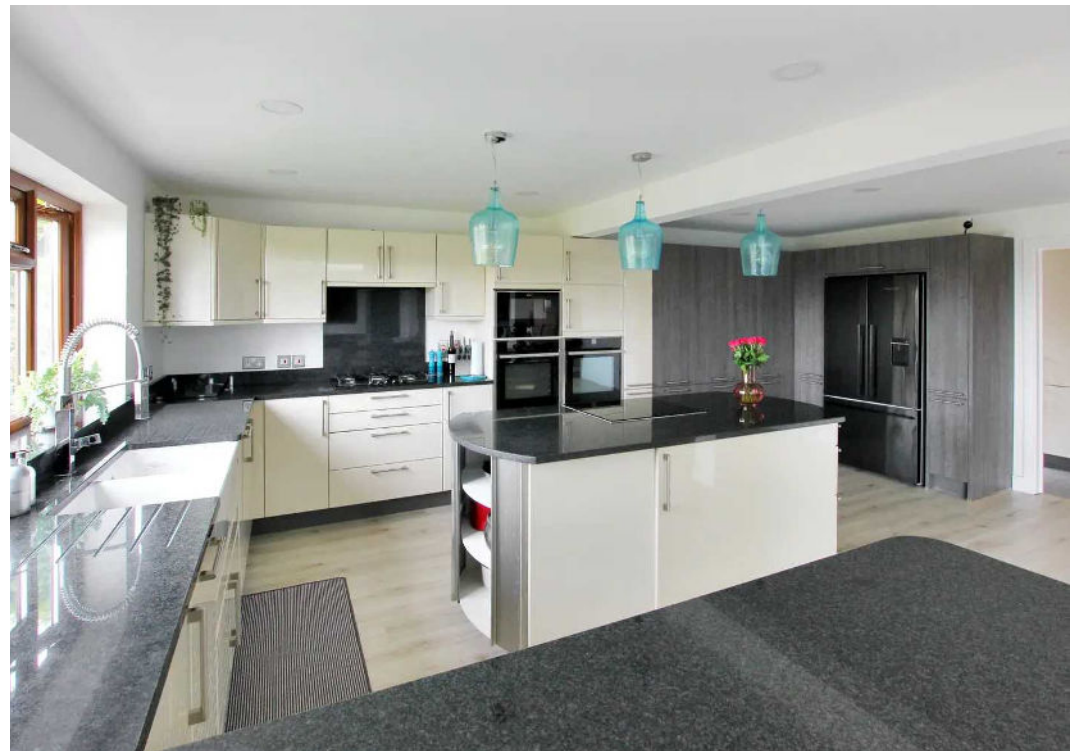
14' 8" x 19' 6" (4.46m x 5.95m)

Family Bathroom

Bedroom

10' 9" x 13' 1" (3.27m x 3.99m)





Ground Floor

Approx. 157.3 sq. metres (1692.6 sq. feet)



First Floor

Approx. 123.0 sq. metres (1323.7 sq. feet)



Total area: approx. 280.2 sq. metres (3016.3 sq. feet)

Plans are for layout purposes only and not drawn to scale, with any doors, windows and other internal features merely intended as a guide.
Plan produced using PlanUp.

These particulars are intended to give a fair and reliable description of the property but no responsibility for any inaccuracy or error can be accepted and do not constitute an offer or contract. We have not tested any services or appliances (including central heating if fitted) referred to in these particulars and purchasers are advised to satisfy themselves as to the working order and condition, if a property is unoccupied at any time there may be reconnection charges for any switched off/disconnected or drained services or appliances. All measurements are approximate.



Andrew & Co Estate Agents - New Romney

01797 362898

newromney@andrewandco.co.uk

