



Cockreed Lane, New Romney

In Excess of £575,000

New Romney



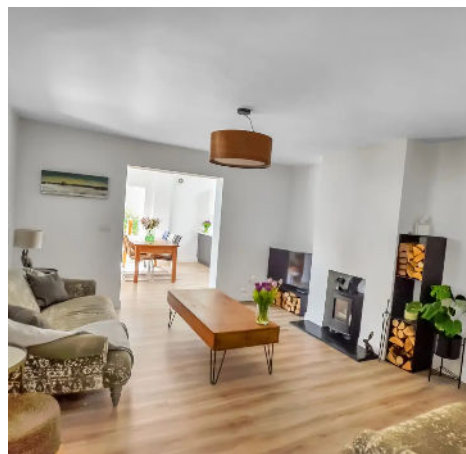
# Sunnyside Cockreed Lane

New Romney, New Romney

Immaculate three bedroom bungalow located in a popular location with in easy walking distance of New Romney Town Centre. This home has been much improved by the current owners and offers plenty of internal and external space. Viewing is essential to understand the quality of finish on offer. Council Tax band: C

Tenure: Freehold

- Immaculately Presented
- Detached Bungalow
- Open plan Living Area
- Large Garden
- Ample Parking
- Fantastic Location
- En-Suite to Master
- Garage/Workshop







### Entrance Hall

**Open Plan Living Space**  
11' 1" x 29' 2" (3.37m x 8.89m)

**Living Room**  
15' 9" x 13' 11" (4.81m x 4.24m)

**Utility Room**  
9' 11" x 10' 7" (3.02m x 3.22m)

**Bedroom**  
10' 11" x 13' 8" (3.32m x 4.16m)

**En-Suite Shower Room**

**Bedroom**  
10' 11" x 10' 0" (3.34m x 3.05m)

**Bedroom**  
8' 1" x 8' 1" (2.46m x 2.46m)

**Bathroom**

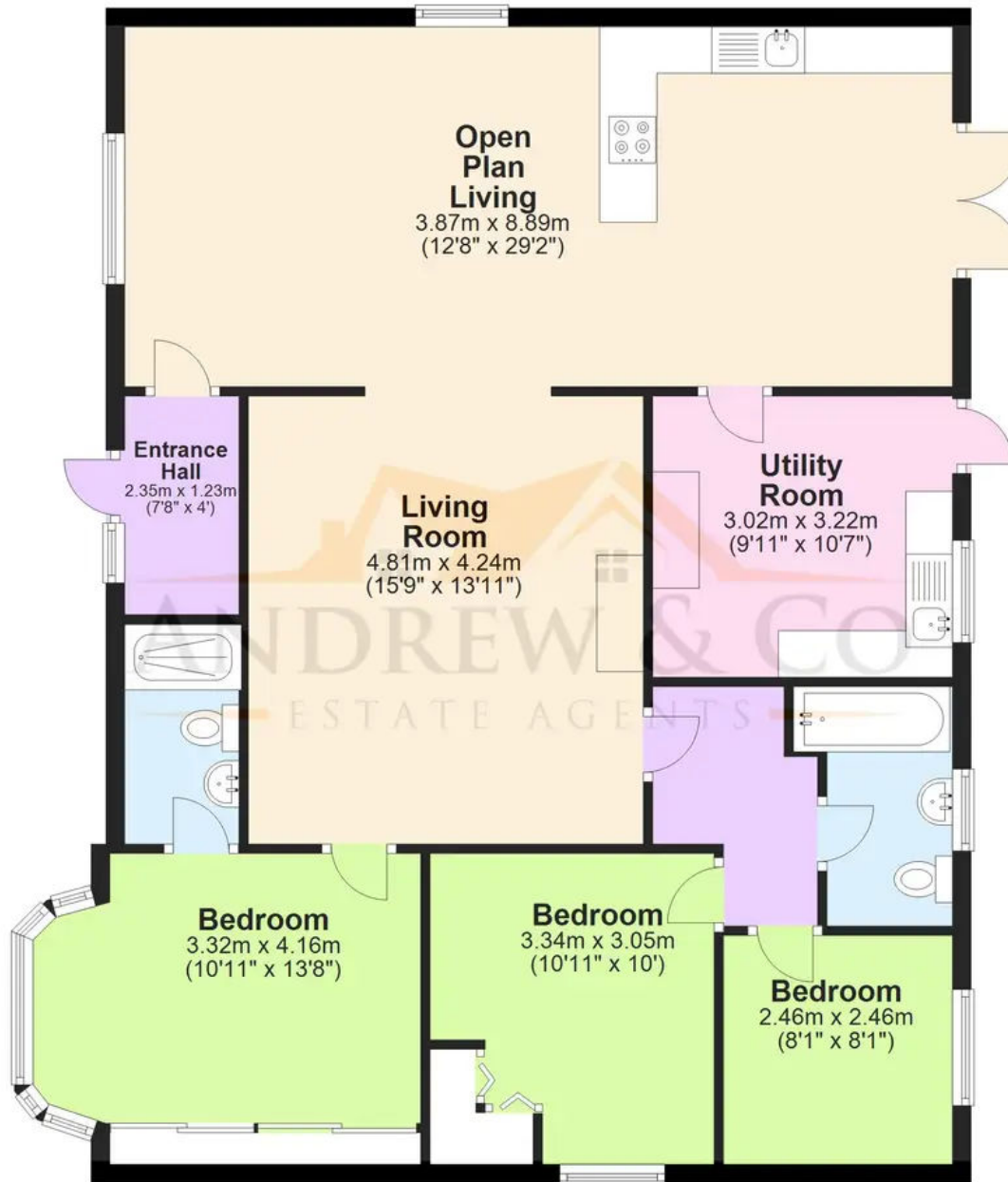






## Ground Floor

Approx. 110.9 sq. metres (1193.8 sq. feet)



Total area: approx. 110.9 sq. metres (1193.8 sq. feet)

Plans are for layout purposes only and not drawn to scale, with any doors, windows and other internal features merely intended as a guide.  
Plan produced using PlanUp.

These particulars are intended to give a fair and reliable description of the property but no responsibility for any inaccuracy or error can be accepted and do not constitute an offer or contract. We have not tested any services or appliances (including central heating if fitted) referred to in these particulars and purchasers are advised to satisfy themselves as to the working order and condition, if a property is unoccupied at any time there may be reconnection charges for any switched off/disconnected or drained services or appliances. All measurements are approximate.



**Andrew & Co Estate Agents - New Romney**

01797 362898

[newromney@andrewandco.co.uk](mailto:newromney@andrewandco.co.uk)

