



## Flat 15, Betsom Place, 3 Leacon Road

Offers in Region of £215,000

# Flat 15

Betsom Place, Ashford

1-bed apartment with 999-year lease and no onward chain. Perfect for first-time buyers or investors. Open plan living area, modern kitchen. Private balcony with views. Access to communal roof terrace. Allocated parking. Great location. Book a viewing to see its potential.

Council Tax band: B

Tenure: Leasehold

- NO ONWARD CHAIN
- One Bedroom Apartment
- Balance of 999 yr lease
- Allocated Parking Space
- Private Balcony & Use of Roof Terrace



## Hallway

## Lounge/Diner

13' 10" x 14' 11" (4.22m x 4.55m)

With sliding doors to balcony

## Kitchen

9' 6" x 7' 7" (2.90m x 2.31m)

Range of white gloss front cupboards with wall mounted units. sink with mixer tap and drainer, cooker with hob and extractor fan over. Integrated fridge/freezer.

## Bedroom

13' 10" x 10' 8" (4.22m x 3.25m)

Carpeted with window to front and mirror fronted wardrobe.

## Bathroom

White suite comprising low level wc, wash hand basin and panelled bath with shower over.



**BALCONY**

Balcony with views to front of building.

**ROOF TERRACE**

Use of roof terrace

**ALLOCATED PARKING**

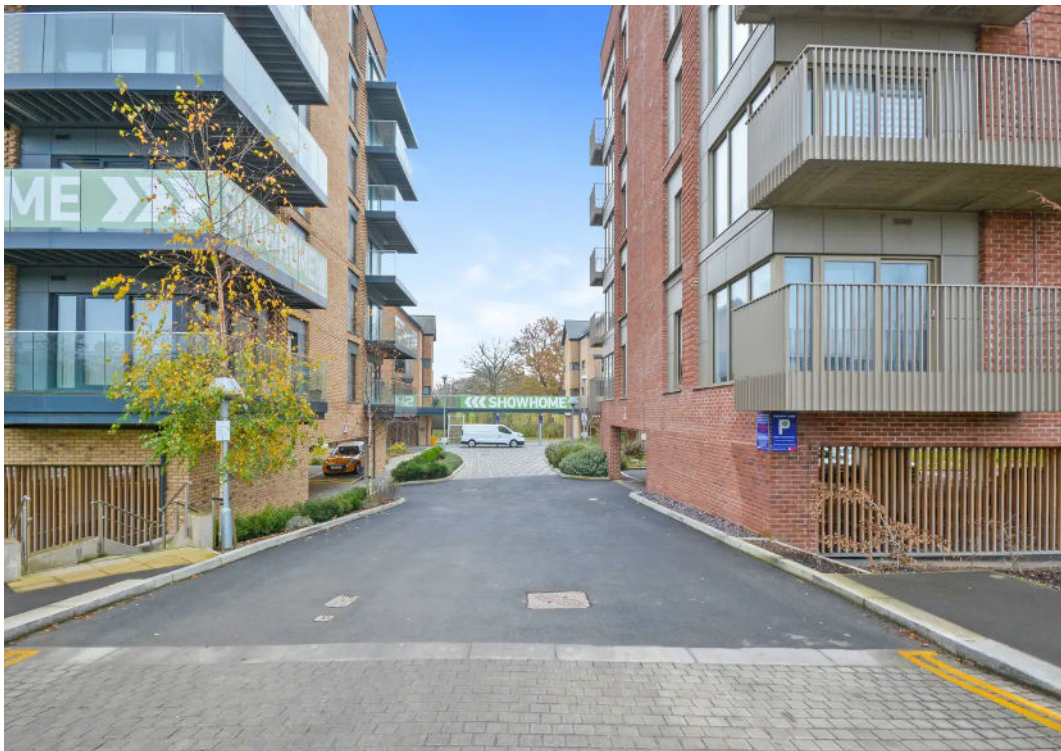
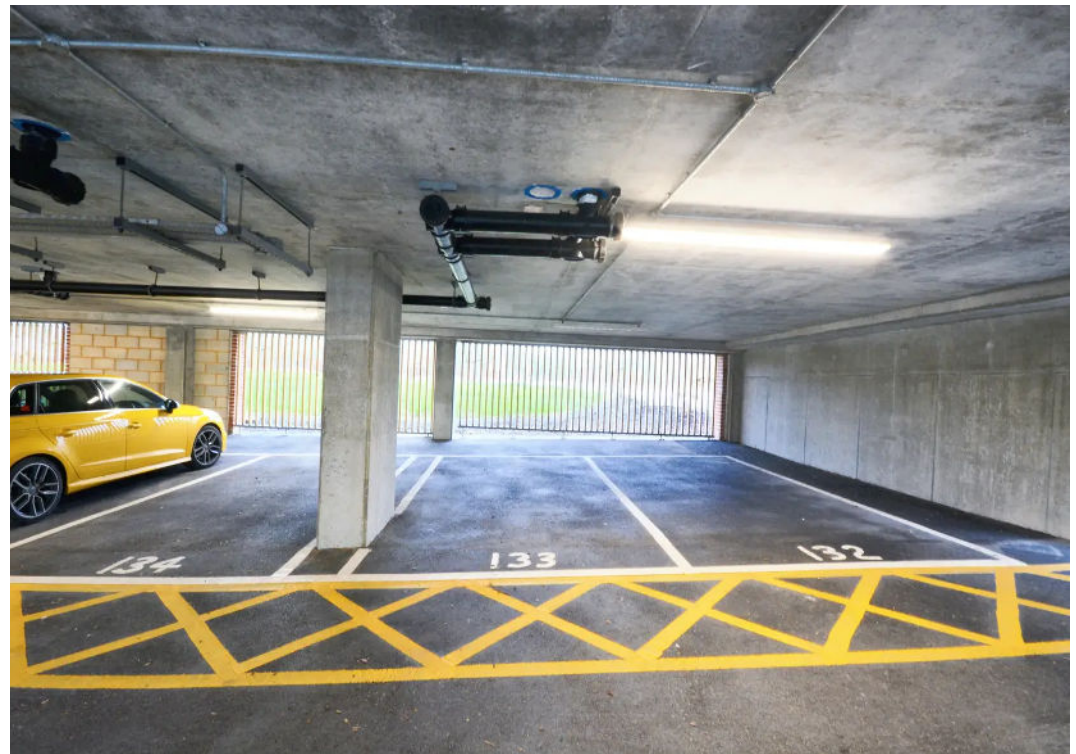
1 Parking Space

Allocated parking space



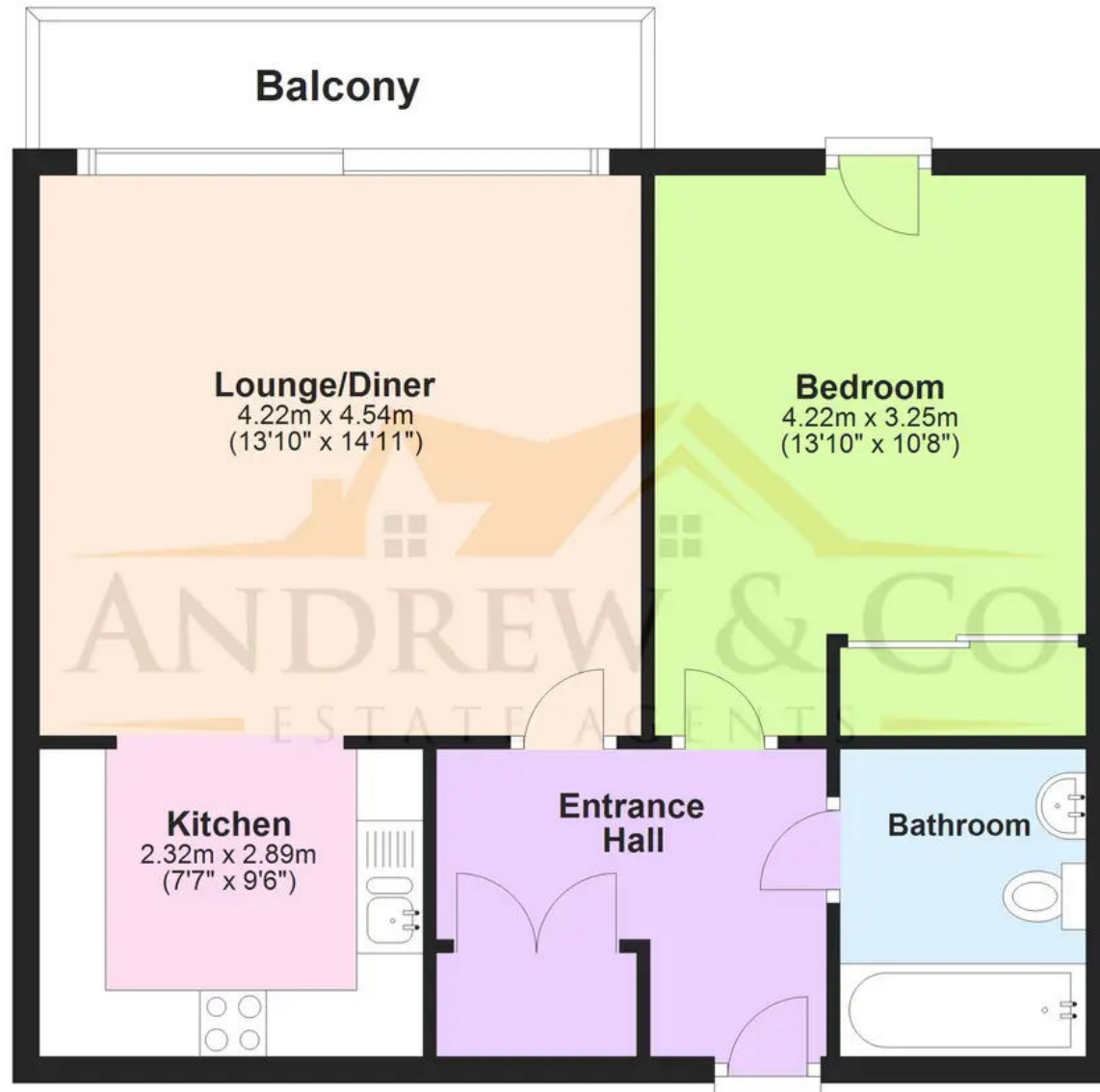






# Ground Floor

Approx. 52.3 sq. metres (563.5 sq. feet)



Total area: approx. 52.3 sq. metres (563.5 sq. feet)

Plans are for layout purposes only and are not drawn to scale, with any doors, windows and other internal features merely intended as a guide.

Plan produced using PlanUp.