



1 Weymouth Close, Folkestone

Guide Price £350,000





1 Weymouth Close

Folkestone, Folkestone

Fantastic 3-bed semi-detached bungalow in sought-after location. Thoughtfully extended with chain-free sale. Spacious garden, detached garage, meticulously maintained outdoor space with lawn, patio areas, raised flower beds, and allotment-style section. Driveway with electric garage door.

Council Tax band: C

Tenure: Freehold

- Guide Price £350,000 - £360,000
- Semi Detached Bungalow
- Three Bedrooms
- Chain Free Sale
- Extended to Rear
- Good Size Garden
- Detached Garage
- Popular Location

Porch

6' 6" x 5' 0" (1.97m x 1.52m)

UPVC double glazed frosted door, tiled flooring, space for tumble dryer, wooden glazed door to:

Entrance Hall

20' 8" x 6' 3" (6.29m x 1.91m)

Carpeted floor coverings, radiator, storage cupboard with shelving, second storage cupboard, coving, loft hatch, thermostat for boiler (in loft). Doors to:

Bedroom

14' 6" x 12' 0" (4.43m x 3.66m)

Dual aspect room, UPVC double glazed windows to front and side, carpeted floor coverings, radiator.

Bedroom

9' 10" x 10' 0" (2.99m x 3.06m)

UPVC double glazed window into front porch, carpeted floor coverings, coving, radiator.

Kitchen

13' 10" x 7' 10" (4.22m x 2.40m)

UPVC double glazed frosted door to side, UPVC double glazed window with views of South Downs. Kitchen comprises range of matching wall and base units, tiled floor, space for washing machine, space for fridge/freezer, integrated NEFF double oven, NEFF gas hob with extractor, integrated NEFF dishwasher, stainless steel sink.

Bedroom

12' 7" x 12' 0" (3.83m x 3.66m)

UPVC double glazed window into extension to rear, carpeted floor coverings, radiator, coving.

Dining Room

9' 2" x 7' 6" (2.79m x 2.28m)

UPVC double glazed window to side, coving, carpeted floor coverings, radiator. Opening to:



Lounge

18' 0" x 9' 11" (5.49m x 3.03m)

Dual aspect room with UPVC double glazed patio door to garden, 3 UPVC double glazed windows - one to side and two to rear, carpeted floor coverings, coving, two radiators.

Shower Room

6' 0" x 6' 5" (1.82m x 1.96m)

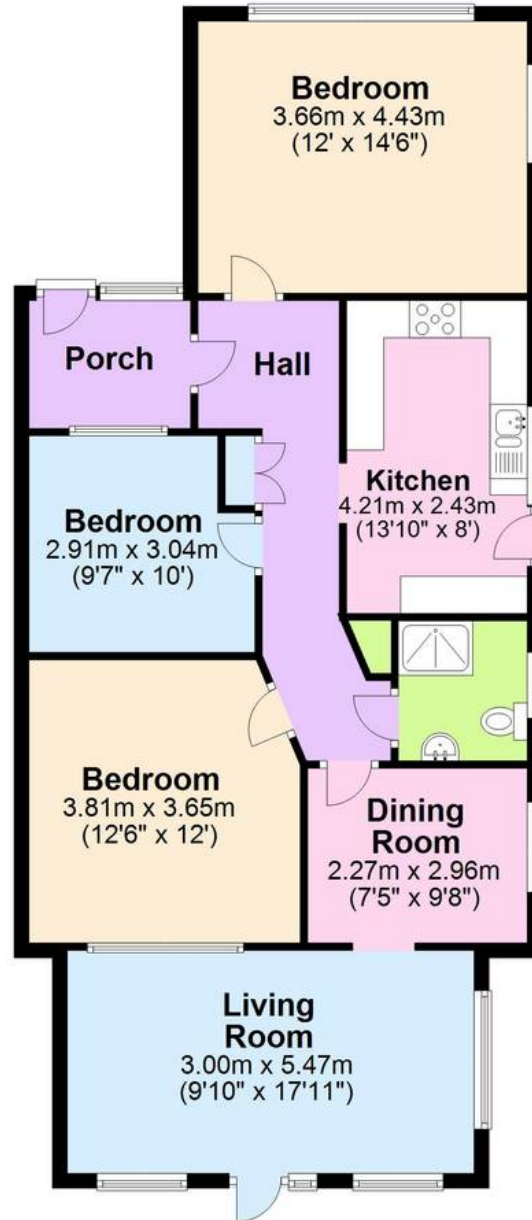
Walk in shower, close coupled WC, vanity hand basin, fully tiled walls, tiled floor, heated towel rail, UPVC double glazed frosted window to side.





Ground Floor

Approx. 92.0 sq. metres (990.3 sq. feet)



Total area: approx. 105.7 sq. metres (1138.1 sq. feet)

Disclaimer: These plans are for information purposes only and are intended to show approximate measurements only. No responsibility is taken for error or omission. Kent Energy Company.
Plan produced using PlanUp.

These particulars are intended to give a fair and reliable description of the property but no responsibility for any inaccuracy or error can be accepted and do not constitute an offer or contract. We have not tested any services or appliances (including central heating if fitted) referred to in these particulars and purchasers are advised to satisfy themselves as to the working order and condition, if a property is unoccupied at any time there may be reconnection charges for any switched off/disconnected or drained services or appliances. All measurements are approximate.



Andrew & Co Estate Agents - Cheriton/Folkestone

01303 279955

cheriton@andrewandco.co.uk

