



30 Stour Close, Ashford

Offers Over £255,000

30 Stour Close

Ashford, Ashford

3-bed terraced house in South Ashford, perfect for first-time buyers or investors. Spacious lounge with media wall, modern kitchen/diner, 3 bedrooms, low-maintenance gardens, and rear access. Prime location near amenities and transport links.

Council Tax band: B

Tenure: Freehold

- Ideal First Time Buy or Buy to Let Investment
- Immaculately Presented Family Home
- 3 Bedrooms
- Open Plan Kitchen/Diner
- Low Maintenance Front & Rear Gardens
- South Ashford Location
- Close to many amenities
- Lounge with built in media wall



Entrance Hallway

With stairs to first floor and under stairs storage area, there is also a large storage cupboard with potential for cloakroom addition.

Lounge

15' 8" x 9' 5" (4.78m x 2.87m)

With window to front and built in media wall with electric fireplace.

Kitchen/Diner

15' 9" x 10' 4" (4.80m x 3.15m)

Range of shaker style cupboards and drawers beneath work surfaces wall mounted gas boiler housed in cupboard, window and sliding patio doors to rear garden. Space and plumbing for washing machine, induction hob with extractor over and double eye level oven, 1 and half bowl stainless steel sink with mixer tap and drainer.

Landing

With doors leading to bedrooms and bathroom as well as airing cupboard.

Bedroom

12' 9" x 9' 9" (3.89m x 2.97m)

With window to front and wall mounted aircon unit (available under separate negotiations).

Bedroom

11' 6" x 6' 8" (3.51m x 2.03m)

With window to rear, loft access and storage cupboard.

Bedroom

9' 7" x 6' 8" (2.92m x 2.03m)

With window to front.

Shower Room

White suite comprising low level wc, wash hand basin in vanity surround, shower cubicle, obscure window to rear, towel radiator.



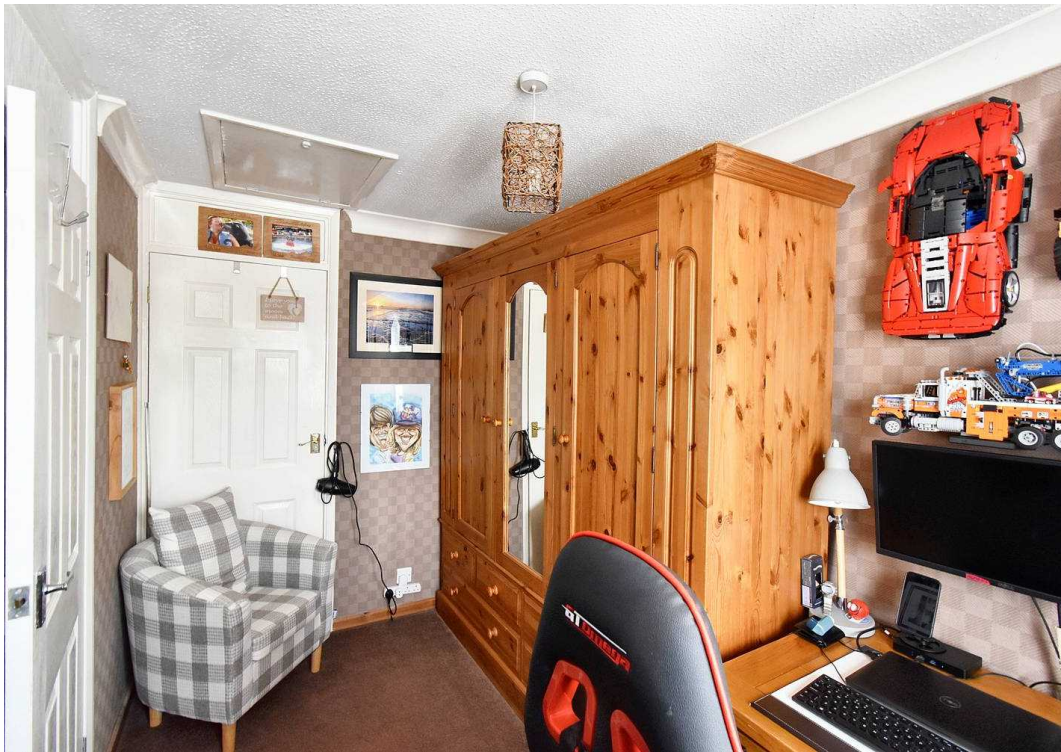
FRONT GARDEN

The front garden is laid with artificial lawn for ease of maintenance with dwarf brick wall and gated access to path leading to front door. There are 2 storage cupboards

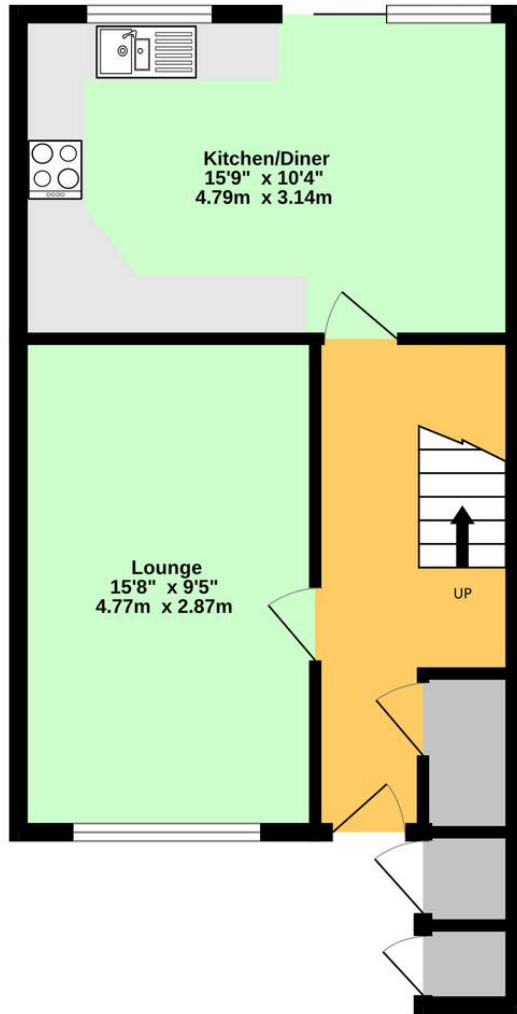
GARDEN

Laid with paving for ease of maintenance with gated rear access and raised pond.

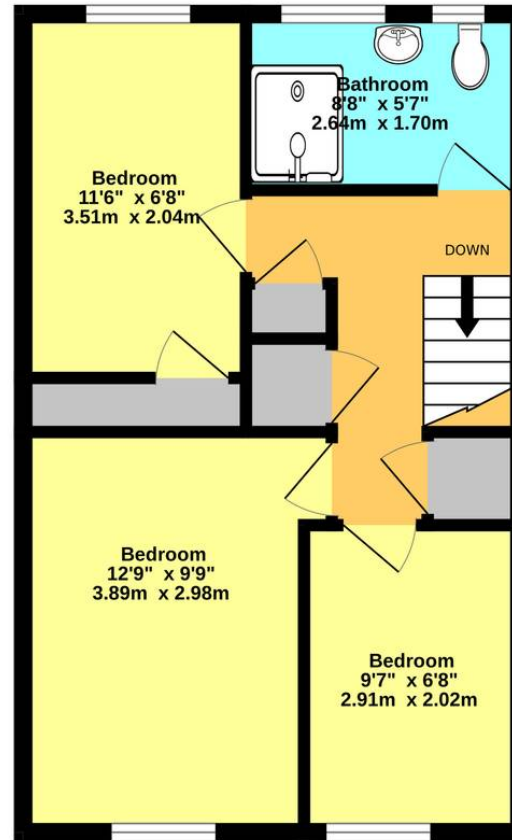




Ground Floor



1st Floor



Whilst every attempt has been made to ensure the accuracy of the floorplan contained here, measurements of doors, windows, rooms and any other items are approximate and no responsibility is taken for any error, omission or mis-statement. This plan is for illustrative purposes only and should be used as such by any prospective purchaser. The services, systems and appliances shown have not been tested and no guarantee as to their operability or efficiency can be given.
Made with Metropix ©2024

These particulars are intended to give a fair and reliable description of the property but no responsibility for any inaccuracy or error can be accepted and do not constitute an offer or contract. We have not tested any services or appliances (including central heating if fitted) referred to in these particulars and purchasers are advised to satisfy themselves as to the working order and condition, if a property is unoccupied at any time there may be reconnection charges for any switched off/disconnected or drained services or appliances. All measurements are approximate.

Andrew & Co Estate Agents - Ashford

01233 632383

info@andrewandco.co.uk

