



Rolfe Lane, New Romney

New Romney

£630,000

Woodmere Rolfe Lane

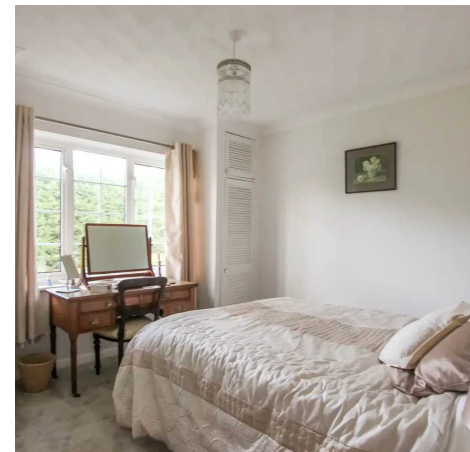
New Romney, New Romney

Exquisite four bed detached bungalow with picturesque gardens. Immaculately presented, spacious living room, modern kitchen/diner, flexible accommodation, ample storage. Beautifully sectioned garden with patio seating area. Central location, close to amenities and transport links. Chain free.

Council Tax band: E

Tenure: Freehold

- Four Bedroom
- Detached Bungalow
- Large Living Room
- Spacious Conservatory
- Kitchen/Diner
- Flexible Accommodation
- Master Bedroom Suite
- Fitted Wardrobes
- Pretty Sectioned Garden
- Chain Free





Entrance Vestibule
9' 9" x 11' 9" (2.98m x 3.58m)

Living Room
18' 10" x 14' 3" (5.73m x 4.34m)

Conservatory
12' 2" x 15' 2" (3.72m x 4.62m)

Kitchen
13' 7" x 12' 11" (4.14m x 3.93m)

Garden Room
11' 1" x 8' 1" (3.37m x 2.47m)

Hallway

Master Bedroom
20' 8" x 15' 0" (6.29m x 4.57m)

En-Suite Bathroom
8' 0" x 15' 1" (2.45m x 4.60m)

Bedroom
10' 9" x 10' 4" (3.27m x 3.14m)

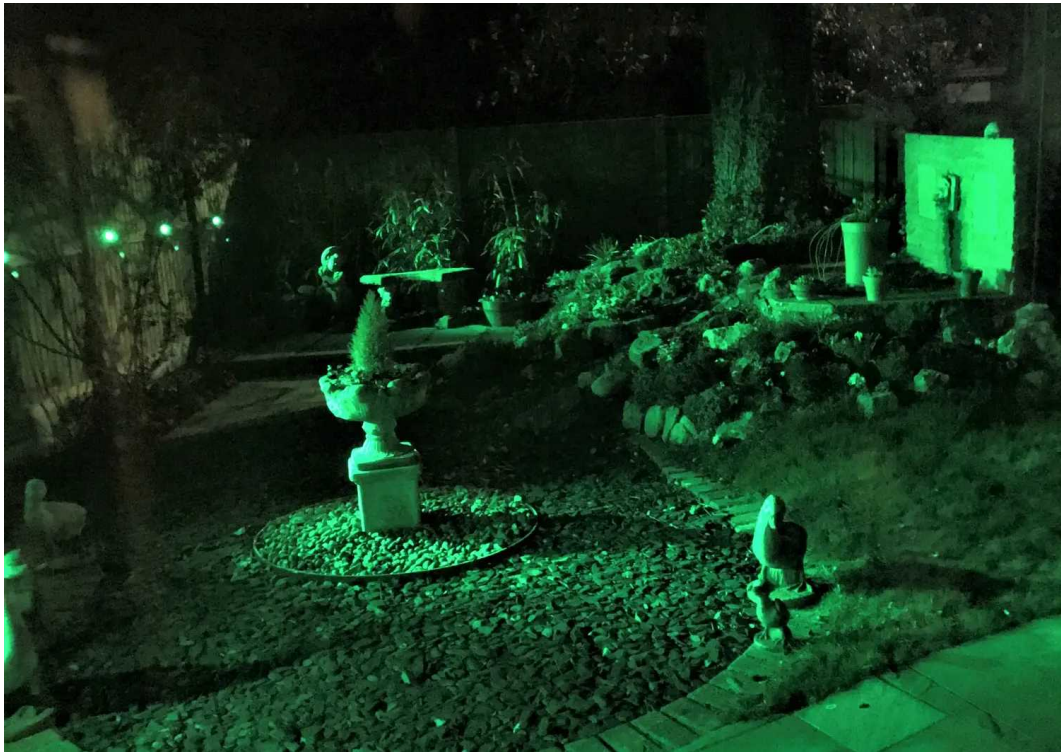
Bedroom/Study
14' 5" x 8' 10" (4.40m x 2.70m)

Bedroom/Dining Room
10' 8" x 15' 3" (3.24m x 4.66m)

Shower Room

Integral Garage
14' 5" x 16' 10" (4.40m x 5.12m)





Ground Floor

Approx. 201.4 sq. metres (2168.0 sq. feet)



Total area: approx. 201.4 sq. metres (2168.0 sq. feet)

Plans are for layout purposes only and not drawn to scale, with any doors, windows and other internal features merely intended as a guide.
Plan produced using PlanUp.

These particulars are intended to give a fair and reliable description of the property but no responsibility for any inaccuracy or error can be accepted and do not constitute an offer or contract. We have not tested any services or appliances (including central heating if fitted) referred to in these particulars and purchasers are advised to satisfy themselves as to the working order and condition, if a property is unoccupied at any time there may be reconnection charges for any switched off/disconnected or drained services or appliances. All measurements are approximate.



Andrew & Co Estate Agents - New Romney

01797 362898

newromney@andrewandco.co.uk

